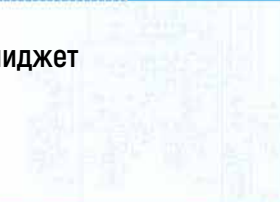




**Многофункциональный счетчик Socomes Diris A-20 - брошюра на продукцию. Юниджет**

Постоянная ссылка на страницу: <https://www.uni-jet.com/catalog/commutation/izmeritelnyie-priboryi/socomes-diris-a-20-new.html>





# DIRIS A-20

Multifunction performance metering & monitoring device - PMD  
Multi-measurement

Single-circuit metering,  
measurement &  
analysis



DIRIS A-20

diris\_981\_e\_front.eps

## The solution for

- > Industry
- > Infrastructure
- > Building



## Strong points

- > User-friendly operation
- > Compliant with IEC 61557-12
- > Detects wiring errors
- > Customisable

## Compliance with standards

- > IEC 61557-12
- > CEI 62053-22 class 0.5S
- > IEC 62053-23 class 2
- > UL



## Related software

- > To use Socomec PMDs effectively, we can offer you several dedicated software tools.  
See page 530.

## Function

DIRIS A-20 units are performance metering and monitoring devices that provide the user with all of the measurements needed to complete energy efficient projects successfully and to provide assured monitoring of electrical distribution.

All of this information can be used and analysed remotely with the help of energy efficiency software programs.

### Advantages

#### User-friendly operation

With its large backlit multiple-display screen with 4 hot keys, the DIRIS A-20 is easy to use.

#### Compliant with IEC 61557-12

Reference standard for PMDs (Performance metering & monitoring devices), IEC 61557-12 guarantees performance levels and satisfactory performance from the PMDs under the environmental conditions typical of industrial and tertiary applications.

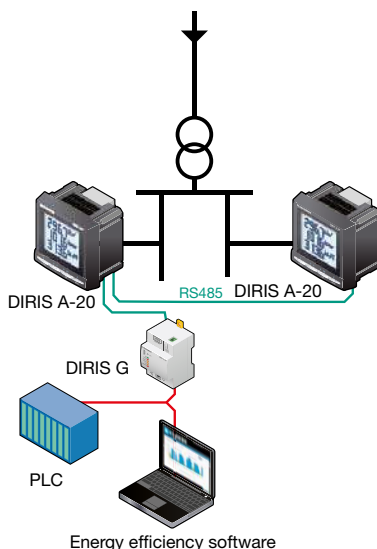
#### Detects wiring errors

The DIRIS A-20 is equipped with an error correction function for TC connection.

#### Customisable

Additional communication and input/output modules can extend the basic functional scope of this product. Equipped with additional modules, the DIRIS A-20 can provide the user with flexibility and expandability throughout the service life of the product.

## Functional diagram



DIRIS\_576\_L1\_en\_cat

## Functions

### Multi-measurement

- Currents
  - instantaneous: I1, I2, I3, In
  - maximum average: I1, I2, I3, In
- Voltages & frequency
  - instantaneous: V1, V2, V3, U12, U23, U31, F
- Powers
  - instantaneous: 3P, ΣP, 3Q, ΣQ, 3S, ΣS
  - maximum average: ΣP, ΣQ, ΣS
- Power factors
  - instantaneous: 3PF, ΣPF

### Metering

- Active energy: +/- kWh
- Reactive energy: +/- kvarh
- Timetable: ⌚

### Harmonic analysis

- Total harmonic distortion (rank 51)
  - Currents: thd I1, thd I2, thd I3
  - Phase-to-neutral voltage: thd V1, thd V2, thd V3
  - Phase-to-phase voltage: thd U12, thd U23, thd U31

### Events

Alarms on all electrical parameters

### Communications <sup>(1)</sup>

RS485 with MODBUS protocol

### Output

- Equipment control
- Alarm report
- Pulse report

### Input

- Information report from a dry external contact

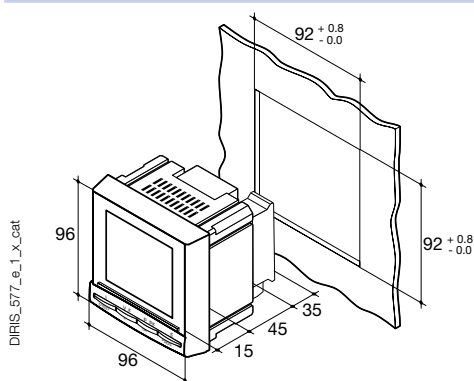
(1) Available as an option (see the following pages).

### Front panel



1. Backlit LCD display
2. Pushbutton for currents (instantaneous and maximum), THD currents and the connection correction function.
3. Pushbutton for voltages, frequency and THD voltages.
4. Pushbutton for power (instantaneous and maximum), active, reactive and effective, power factor.
5. Pushbutton for energy sources and timer counter.

### Case



Type	Plug-in
Dimensions L x H x P	96 x 96 x 60 mm
Case degree of protection	IP30
Front degree of protection	IP52
Display type	Backlit LCD
Type of terminal strips	Fixed or removable
Section for connection of voltages and other terminals	0.2 ... 2.5 mm <sup>2</sup>
Section for connection of currents	0.5 ... 6 mm <sup>2</sup>
Weight	400 g

### Plug-in optional modules

#### DIRIS® A-20



#### 1 output

- 1 output that can be configured for:
- pulses: configurable (type, weight, duration) to kWh or kVarh.
  - Monitoring: 3I, In, 3V, 3U, F, ΣP, ΣQ, ΣS, ΣPFL/C, THD 3I, THD 3V, THD 3U and timer meter.
  - Equipment control



#### Communication

RS485 link with MODBUS protocol (speed up to 38 400 baud).

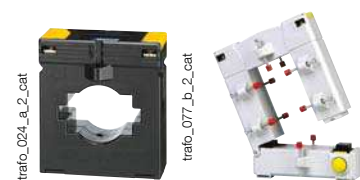


#### 3 inputs , 1 output

- 3 inputs can be configured into:
- Information report from an external contact.
- 1 output that can be configured for:
- pulses: configurable (type, weight, duration) to kWh or kVarh.
  - Monitoring: 3I, In, 3V, 3U, F, ΣP, ΣQ, ΣS, ΣPFL/C, THD 3I, THD 3V, THD 3U and timer meter.
  - Equipment control

### Accessories

Current transformer (see page 488)



IP65 protection



# DIRIS A-20

Multifunction performance metering & monitoring device - PMD

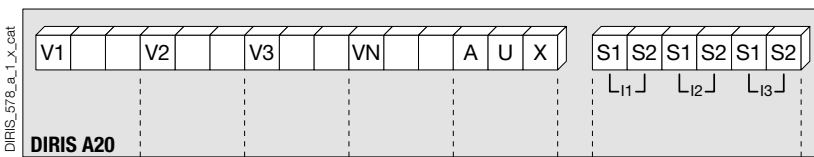
Multi-measurement

## Electrical characteristics

Current measurement (TRMS)	
Via CT primary	9 999 A
Via CT secondary	5 A
Measurement range	0 ... 11 kA
Input consumption	0.6 VA
Measurement updating period	1 s
Accuracy	0.2%
Permanent overload	6 A
Intermittent overload	10 I <sub>n</sub> over 1 sec
Voltage measurements (TRMS)	
Direct measurement between phases	50 ... 500 VAC
Direct measurement between phase and neutral	28 ... 289 VAC
Input consumption	≤ 0.1 VA
Measurement updating period	1 s
Accuracy	0.2%
Power measurement	
Measurement updating period	1 s
Accuracy	0.5%
Power factor measurement	
Measurement updating period	1 s
Accuracy	0.5%
Frequency measurement	
Measurement range	45 ... 65 Hz
Measurement updating period	1 s
Accuracy	0.1%

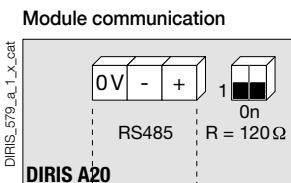
Energy accuracy	
Active (according to IEC 62053-22)	Class 0.5 S
Reactive (in acc. with CEI 62053-23)	Class 2
Auxiliary power supply	
Alternative voltage	110 ... 400 VAC
AC tolerance	± 10%
DC voltage	120 ... 289 VDC
DC tolerance	± 20%
Frequency	50 / 60 Hz
Power consumption	10 VA
Pulse or alarm output	
Number	1
Type	100 VDC - 0,5 A - 10 VA
Max. number of manoeuvres	≤ 10 <sup>8</sup>
Inputs	
Number	3
Power supply	10 ... 30 VDC
Minimum width of signal	10 ms
Minimum length between 2 pulses	18 ms
Type	Optical couplers
Communication	
Link	RS485
Type	2 to 3 half duplex wires
Protocol	MODBUS® in RTU mode
MODBUS® speed	1400 ... 38400 baud
Operating conditions	
Operating temperature range	- 10 ... + 55°C
Storage temperature	- 20 ... + 85°C
Relative humidity	95%

## Terminals

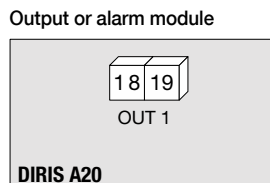


S1 - S2: current inputs.

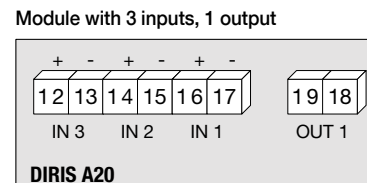
AUX: auxiliary power supply U<sub>s</sub>.  
V1, V2, V3 & VN: voltage inputs.



RS485 link.  
R = 120 Ω : internal resistance for the RS485 link.



18 - 19: output n°1



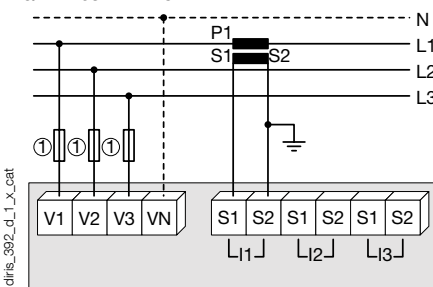
## Connection

### Low voltage balanced network

#### Recommendation

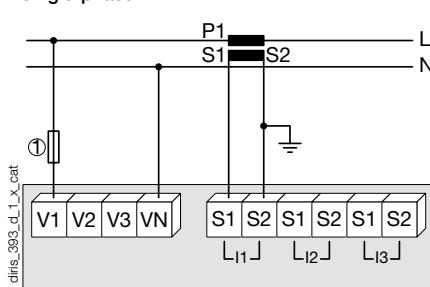
- For IT earthing systems, it is recommended that the CT secondary is not connected to earth.
- When disconnecting the DIRIS, the secondary of each current transformer must be short-circuited. This operation can be carried out automatically by a SOCOMEC PTI, which can be found in the SOCOMEC catalogue: please consult us.

#### 3/4 wires with 1 CT



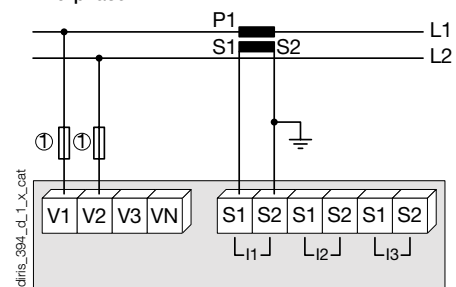
The 1CT solution reduces by 0.5% the accuracy of the phase for which the current is deduced by a vector calculation.  
1. 0.5 A gG / 0.5 A class CC fuses.

#### Single-phase



1. 0.5 A gG / 0.5 A class CC fuses.

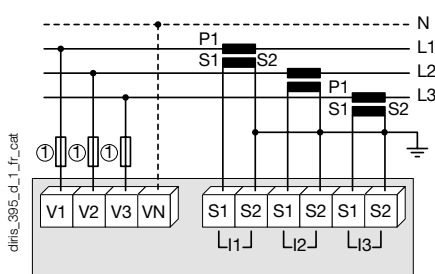
#### Two-phase



1. 0.5 A gG / 0.5 A class CC fuses.

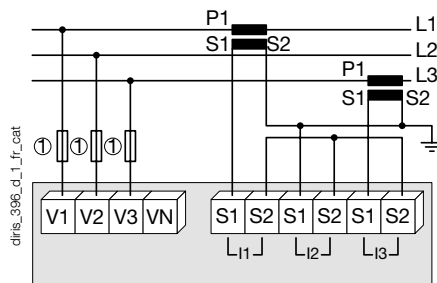
#### Low voltage unbalanced network

##### 3/4 wires with 3 CTs



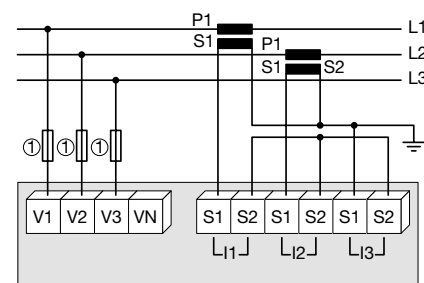
1. 0.5 A gG / 0.5 A class CC fuses.

##### 3 wires with 2 CTs



The 2CT solution reduces by 0.5% the accuracy of the phase for which the current is deduced by a vector calculation.  
1. 0.5 A gG / 0.5 A class CC fuses.

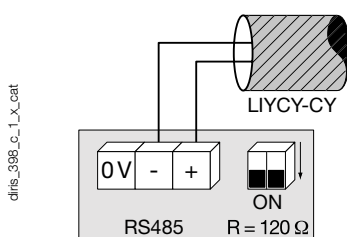
##### 3 wires with 2 CTs



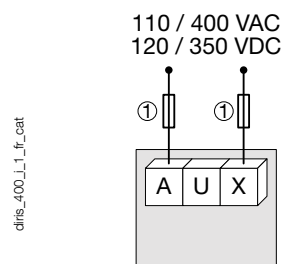
The 2CT solution reduces by 0.5% the accuracy of the phase for which the current is deduced by a vector calculation.  
1. 0.5 A gG / 0.5 A class CC fuses.

#### Additional information

##### Communication via RS485 link



##### AC and DC auxiliary power supply



1. 0.5 A gG / 0.5 A class CC fuses.

#### References

Basic device		DIRIS A-20
<b>Auxiliary power supply U<sub>a</sub></b>		<b>Part number</b>
110 ... 400 VAC / 120 ... 350 VDC		4825 <b>0402</b>
<b>Options</b>		<b>Part number</b>
<b>Plug-in optional modules</b>		
On/Off output.		4825 <b>0080</b>
RS485 MODBUS® communication		4825 <b>0082</b>
3 inputs, 1 output		4825 <b>0083</b>
<b>Accessories</b>		
<b>Designation of accessories</b>	<b>To be ordered in multiples of</b>	<b>Part number</b>
Protection IP65	1	4825 <b>0089</b>
Plug-in kit for cutout 144 x 96 mm	1	4825 <b>0088</b>
Fuse circuit breakers to protect voltage inputs (type RM) 3 pole	4	5601 <b>0018</b>
Fuse circuit breakers to protect the auxiliary power supply (type RM) 1 pole + neutral	6	5601 <b>0017</b>
gG 10x38 0.5 A fuses	10	6012 <b>0000</b>
Ferrite for use with communication modules	1	4899 <b>0011</b>
Current transformer range	1	see page 488
Software associated with DIRIS		see page 530

#### Expert Services

- > Study, definition, advice, implementation, maintenance and training ... Our experts "Expert Services" offer complete support for the success of your project.

